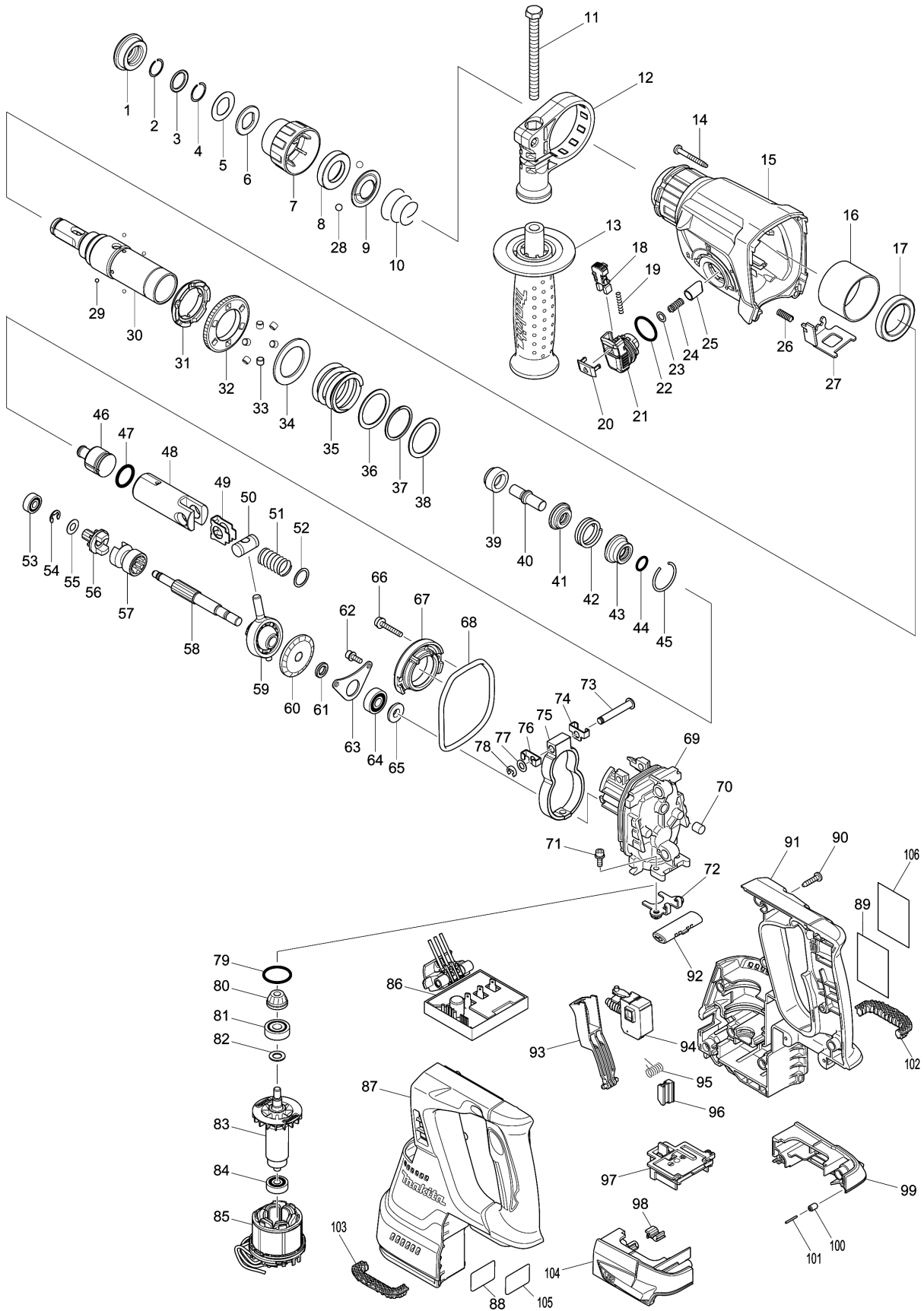


Model No.DHR242 24MM CORDLESS COMBI. HAMMER



Model No.DHR242 24MM CORDLESS COMBI. HAMMER

Item	Parts No.	Description	I/C	Qty	New/Old	Opt. 1	Opt. 2	Note
001	286288-8	CAP 35		1				
002	233989-9	RING SPRING 14		1				
003	346221-3	WASHER 16		1				
004	233992-0	RING SPRING 15		1				
005	267437-6	FLAT WASHER 17		1				
006	424364-2	RUBBER WASHER 16		1				
007	451533-2	CHUCK COVER		1				
008	325813-1	RING 21		1				
009	346177-0	GUIDE WASHER		1				
010	233916-6	CONICAL COMP. SPRING 21-29		1				
011	266745-2	HEX.BOLT M8X90		1				
012	453129-5	GRIP BASE		1				
013	158057-6	GRIP 36 COMPLETE		1				
014	266351-3	TAPPING SCREW 4X35		4				
015I	141229-0	GEAR HOUSING COMPLETE		1	*			
C10	213345-9	OIL SEAL 25		1	*			
C20	890903-4	INDICATION LABEL		1	*			
015J	141229-0	GEAR HOUSING COMPLETE		1	*			
C10	213345-9	OIL SEAL 25		1	*			
C20	890903-4	INDICATION LABEL		1	*			
015K	141229-0	GEAR HOUSING COMPLETE		1	*			
C10	213345-9	OIL SEAL 25		1	*			
C20	890903-4	INDICATION LABEL		1	*			
015L	141229-0	GEAR HOUSING COMPLETE		1	*			
C10	213345-9	OIL SEAL 25		1	*			
C20	890903-4	INDICATION LABEL		1	*			
015M	141229-0	GEAR HOUSING COMPLETE		1	*			
C10	213345-9	OIL SEAL 25		1	*			
C20	890903-4	INDICATION LABEL		1	*			
015N	141229-0	GEAR HOUSING COMPLETE		1	*			
C10	213345-9	OIL SEAL 25		1	*			
C20	890903-4	INDICATION LABEL		1	*			
015O	141229-0	GEAR HOUSING COMPLETE		1	*			
C10	213345-9	OIL SEAL 25		1	*			
C20	890903-4	INDICATION LABEL		1	*			
015P	141229-0	GEAR HOUSING COMPLETE		1	*			
C10	213345-9	OIL SEAL 25		1	*			
C20	890903-4	INDICATION LABEL		1	*			
015Q	141229-0	GEAR HOUSING COMPLETE		1	*			
C10	213345-9	OIL SEAL 25		1	*			
C20	890903-4	INDICATION LABEL		1	*			
015R	141229-0	GEAR HOUSING COMPLETE		1	*			

Please order the parts with part number.

Print Date 26/3/2020

Model No.DHR242 24MM CORDLESS COMBI. HAMMER

Item	Parts No.	Description	I/C	Qty	New/Old	Opt. 1	Opt. 2	Note
C10	213345-9	OIL SEAL 25		1	*			
C20	890903-4	INDICATION LABEL		1	*			
015S	141229-0	GEAR HOUSING COMPLETE		1	*			
C10	213345-9	OIL SEAL 25		1	*			
C20	890903-4	INDICATION LABEL		1	*			
015T	141229-0	GEAR HOUSING COMPLETE		1	*			
C10	213345-9	OIL SEAL 25		1	*			
C20	890903-4	INDICATION LABEL		1	*			
015-1E	144354-6	GEAR HOUSING COMPLETE		1				
C10	213345-9	OIL SEAL 25		1				
C20	810X86-8	INDICATION LABEL		1				
015-1I	144354-6	GEAR HOUSING COMPLETE	<	1				
C10	213345-9	OIL SEAL 25		1				
C20	810X86-8	INDICATION LABEL	<	1				
015-1J	144354-6	GEAR HOUSING COMPLETE	<	1				
C10	213345-9	OIL SEAL 25		1				
C20	810X86-8	INDICATION LABEL	<	1				
015-1K	144354-6	GEAR HOUSING COMPLETE	<	1				
C10	213345-9	OIL SEAL 25		1				
C20	810X86-8	INDICATION LABEL	<	1				
015-1L	144354-6	GEAR HOUSING COMPLETE	<	1				
C10	213345-9	OIL SEAL 25		1				
C20	810X86-8	INDICATION LABEL	<	1				
015-1M	144354-6	GEAR HOUSING COMPLETE	<	1				
C10	213345-9	OIL SEAL 25		1				
C20	810X86-8	INDICATION LABEL	<	1				
015-1N	144354-6	GEAR HOUSING COMPLETE	<	1				
C10	213345-9	OIL SEAL 25		1				
C20	810X86-8	INDICATION LABEL	<	1				
015-1O	144354-6	GEAR HOUSING COMPLETE	<	1				
C10	213345-9	OIL SEAL 25		1				
C20	810X86-8	INDICATION LABEL	<	1				
015-1P	144354-6	GEAR HOUSING COMPLETE	<	1				
C10	213345-9	OIL SEAL 25		1				
C20	810X86-8	INDICATION LABEL	<	1				
015-1Q	144354-6	GEAR HOUSING COMPLETE	<	1				
C10	213345-9	OIL SEAL 25		1				
C20	810X86-8	INDICATION LABEL	<	1				
015-1R	144354-6	GEAR HOUSING COMPLETE	<	1				
C10	213345-9	OIL SEAL 25		1				
C20	810X86-8	INDICATION LABEL	<	1				
015-1S	144354-6	GEAR HOUSING COMPLETE	<	1				

Please order the parts with part number.

Print Date 26/3/2020

Model No.DHR242 24MM CORDLESS COMBI. HAMMER

Item	Parts No.	Description	I/C	Qty	New/Old	Opt. 1	Opt. 2	Note
C10	213345-9	OIL SEAL 25		1				
C20	810X86-8	INDICATION LABEL	<	1				
015-1T	144354-6	GEAR HOUSING COMPLETE	<	1				
C10	213345-9	OIL SEAL 25		1				
C20	810X86-8	INDICATION LABEL	<	1				
015-1V	144354-6	GEAR HOUSING COMPLETE		1				
C10	213345-9	OIL SEAL 25		1				
C20	810X86-8	INDICATION LABEL		1				
015-1W	144354-6	GEAR HOUSING COMPLETE		1				
C10	213345-9	OIL SEAL 25		1				
C20	810X86-8	INDICATION LABEL		1				
015-1X	144354-6	GEAR HOUSING COMPLETE		1				
C10	213345-9	OIL SEAL 25		1				
C20	810X86-8	INDICATION LABEL		1				
015-1Y	144354-6	GEAR HOUSING COMPLETE		1				
C10	213345-9	OIL SEAL 25		1				
C20	810X86-8	INDICATION LABEL		1				
015-1Z	144354-6	GEAR HOUSING COMPLETE		1				
C10	213345-9	OIL SEAL 25		1				
C20	810X86-8	INDICATION LABEL		1				
016	331890-3	CUP SLEEVE		1				
017	211294-4	BALL BEARING 6806LLU		1				
018	454112-5	LOCK BUTTON		1				
019	234264-6	COMPRESSION SPRING 3		1				
020	453131-8	CHANGE LEVER COVER		1				
021	453125-3	CHANGE LEVER		1				
022	213381-5	O RING 21		1				
023	253308-3	THIN WASHER 6		1				
024	234147-0	COMPRESSION SPRING 5		1				
025I	325785-0	PUSH CORN		1	*			
025J	325785-0	PUSH CORN		1	*			
025K	325785-0	PUSH CORN		1	*			
025L	325785-0	PUSH CORN		1	*			
025M	325785-0	PUSH CORN		1	*			
025N	325785-0	PUSH CORN		1	*			
025O	325785-0	PUSH CORN		1	*			
025P	325785-0	PUSH CORN		1	*			
025Q	325785-0	PUSH CORN		1	*			
025R	325785-0	PUSH CORN		1	*			
025S	325785-0	PUSH CORN		1	*			
025T	325785-0	PUSH CORN		1	*			
025-1E	326850-8	PUSH CORN		1				

Model No.DHR242 24MM CORDLESS COMBI. HAMMER

Item	Parts No.	Description	I/C	Qty	New/Old	Opt. 1	Opt. 2	Note
025-1I	326850-8	PUSH CORN	S	1				
025-1J	326850-8	PUSH CORN	S	1				
025-1K	326850-8	PUSH CORN	S	1				
025-1L	326850-8	PUSH CORN	S	1				
025-1M	326850-8	PUSH CORN	S	1				
025-1N	326850-8	PUSH CORN	S	1				
025-1O	326850-8	PUSH CORN	S	1				
025-1P	326850-8	PUSH CORN	S	1				
025-1Q	326850-8	PUSH CORN	S	1				
025-1R	326850-8	PUSH CORN	S	1				
025-1S	326850-8	PUSH CORN	S	1				
025-1T	326850-8	PUSH CORN	S	1				
025-1V	326850-8	PUSH CORN		1				
025-1W	326850-8	PUSH CORN		1				
025-1X	326850-8	PUSH CORN		1				
025-1Y	326850-8	PUSH CORN		1				
025-1Z	326850-8	PUSH CORN		1				
026	233360-7	COMPRESSION SPRING 4		1				
027	346537-6	LOCK PLATE		1				
028	216022-2	STEEL BALL 7.0		2				
029	216019-1	STEEL BALL 3		4				
030	140265-3	TOOL HOLDER COMPLETE		1				
031I	313149-0	DRIVING FLANGE		1	*			
031J	313149-0	DRIVING FLANGE		1	*			
031K	313149-0	DRIVING FLANGE		1	*			
031L	313149-0	DRIVING FLANGE		1	*			
031M	313149-0	DRIVING FLANGE		1	*			
031N	313149-0	DRIVING FLANGE		1	*			
031O	313149-0	DRIVING FLANGE		1	*			
031P	313149-0	DRIVING FLANGE		1	*			
031Q	313149-0	DRIVING FLANGE		1	*			
031R	313149-0	DRIVING FLANGE		1	*			
031S	313149-0	DRIVING FLANGE		1	*			
031-1E	332139-4	DRIVING FLANGE		1				
031-1I	332139-4	DRIVING FLANGE	S	1				
031-1J	332139-4	DRIVING FLANGE	S	1				
031-1K	332139-4	DRIVING FLANGE	S	1				
031-1L	332139-4	DRIVING FLANGE	S	1				
031-1M	332139-4	DRIVING FLANGE	S	1				
031-1N	332139-4	DRIVING FLANGE	S	1				
031-1O	332139-4	DRIVING FLANGE	S	1				
031-1P	332139-4	DRIVING FLANGE	S	1				

Model No.DHR242 24MM CORDLESS COMBI. HAMMER

Item	Parts No.	Description	I/C	Qty	New/Old	Opt. 1	Opt. 2	Note
031-1Q	332139-4	DRIVING FLANGE	S	1				
031-1R	332139-4	DRIVING FLANGE	S	1				
031-1S	332139-4	DRIVING FLANGE	S	1				
031-1T	332139-4	DRIVING FLANGE		1				
031-1V	332139-4	DRIVING FLANGE		1				
031-1W	332139-4	DRIVING FLANGE		1				
031-1X	332139-4	DRIVING FLANGE		1				
031-1Y	332139-4	DRIVING FLANGE		1				
031-1Z	332139-4	DRIVING FLANGE		1				
032I	227232-6	SPUR GEAR 51		1	*			
032J	227232-6	SPUR GEAR 51		1	*			
032K	227232-6	SPUR GEAR 51		1	*			
032L	227232-6	SPUR GEAR 51		1	*			
032M	227232-6	SPUR GEAR 51		1	*			
032N	227232-6	SPUR GEAR 51		1	*			
032O	227232-6	SPUR GEAR 51		1	*			
032P	227232-6	SPUR GEAR 51		1	*			
032Q	227232-6	SPUR GEAR 51		1	*			
032R	227232-6	SPUR GEAR 51		1	*			
032S	227232-6	SPUR GEAR 51		1	*			
032-1E	227360-7	SPUR GEAR 51		1				
032-1I	227360-7	SPUR GEAR 51	S	1				
032-1J	227360-7	SPUR GEAR 51	S	1				
032-1K	227360-7	SPUR GEAR 51	S	1				
032-1L	227360-7	SPUR GEAR 51	S	1				
032-1M	227360-7	SPUR GEAR 51	S	1				
032-1N	227360-7	SPUR GEAR 51	S	1				
032-1O	227360-7	SPUR GEAR 51	S	1				
032-1P	227360-7	SPUR GEAR 51	S	1				
032-1Q	227360-7	SPUR GEAR 51	S	1				
032-1R	227360-7	SPUR GEAR 51	S	1				
032-1S	227360-7	SPUR GEAR 51	S	1				
032-1T	227360-7	SPUR GEAR 51		1				
032-1V	227360-7	SPUR GEAR 51		1				
032-1W	227360-7	SPUR GEAR 51		1				
032-1X	227360-7	SPUR GEAR 51		1				
032-1Y	227360-7	SPUR GEAR 51		1				
032-1Z	227360-7	SPUR GEAR 51		1				
033I	268226-2	PIN 6		6	*			
033J	268226-2	PIN 6		6	*			
033K	268226-2	PIN 6		6	*			
033L	268226-2	PIN 6		6	*			

Model No.DHR242 24MM CORDLESS COMBI. HAMMER

Item	Parts No.	Description	I/C	Qty	New/Old	Opt. 1	Opt. 2	Note
033M	268226-2	PIN 6		6	*			
033N	268226-2	PIN 6		6	*			
033O	268226-2	PIN 6		6	*			
033P	268226-2	PIN 6		6	*			
033Q	268226-2	PIN 6		6	*			
033R	268226-2	PIN 6		6	*			
033S	268226-2	PIN 6		6	*			
034I	267414-8	FLAT WASHER 30		1	*			
034J	267414-8	FLAT WASHER 30		1	*			
034K	267414-8	FLAT WASHER 30		1	*			
034L	267414-8	FLAT WASHER 30		1	*			
034M	267414-8	FLAT WASHER 30		1	*			
034N	267414-8	FLAT WASHER 30		1	*			
034O	267414-8	FLAT WASHER 30		1	*			
034P	267414-8	FLAT WASHER 30		1	*			
034Q	267414-8	FLAT WASHER 30		1	*			
034R	267414-8	FLAT WASHER 30		1	*			
034S	267414-8	FLAT WASHER 30		1	*			
035	234148-8	COMPRESSION SPRING 31		1				
036	267153-0	FLAT WASHER 30		1				
037	257932-4	SPIRO LOCK WASHER 30		1				
038	267153-0	FLAT WASHER 30		1				
039	325783-4	SLEEVE 9B		1				
040	325789-2	IMPACT BOLT A		1				
041	325792-3	WASHER 10		1				
042	234149-6	COMPRESSION SPRING 20		1				
043	325793-1	O-RING CASE B		1				
044	213073-6	O RING 9		1				
045	233979-2	RING SPRING 28		1				
046	326139-4	STRIKER		1				
047	213258-4	O RING 17.5		1				
048	310345-1	PISTON CYLINDER		1				
049	346036-8	GUIDE PLATE		1				
050	324215-8	PISTON JOINT		1				
051	234098-7	COMPRESSION SPRING 14		1				
052	267447-3	FLAT WASHER 14		1				
053	211012-0	BALL BEARING 606ZZ		1				
054	257336-0	STOP RING EXT U-6		1				
055	253186-1	FLAT WASHER 7		1				
056	227231-8	SPUR GEAR 10		1				
057I	331814-9	CLUTCH CAM A		1	*			
057J	331814-9	CLUTCH CAM A		1	*			

Please order the parts with part number.

Print Date 26/3/2020

Model No.DHR242 24MM CORDLESS COMBI. HAMMER

Item	Parts No.	Description	I/C	Qty	New/Old	Opt. 1	Opt. 2	Note
057K	331814-9	CLUTCH CAM A		1	*			
057L	331814-9	CLUTCH CAM A		1	*			
057M	331814-9	CLUTCH CAM A		1	*			
057N	331814-9	CLUTCH CAM A		1	*			
057O	331814-9	CLUTCH CAM A		1	*			
057P	331814-9	CLUTCH CAM A		1	*			
057Q	331814-9	CLUTCH CAM A		1	*			
057R	331814-9	CLUTCH CAM A		1	*			
057S	331814-9	CLUTCH CAM A		1	*			
057T	331814-9	CLUTCH CAM A		1	*			
057-1E	326849-3	CLUTCH CAM A		1				
057-1I	326849-3	CLUTCH CAM A	S	1				
057-1J	326849-3	CLUTCH CAM A	S	1				
057-1K	326849-3	CLUTCH CAM A	S	1				
057-1L	326849-3	CLUTCH CAM A	S	1				
057-1M	326849-3	CLUTCH CAM A	S	1				
057-1N	326849-3	CLUTCH CAM A	S	1				
057-1O	326849-3	CLUTCH CAM A	S	1				
057-1P	326849-3	CLUTCH CAM A	S	1				
057-1Q	326849-3	CLUTCH CAM A	S	1				
057-1R	326849-3	CLUTCH CAM A	S	1				
057-1S	326849-3	CLUTCH CAM A	S	1				
057-1T	326849-3	CLUTCH CAM A	S	1				
057-1V	326849-3	CLUTCH CAM A		1				
057-1W	326849-3	CLUTCH CAM A		1				
057-1X	326849-3	CLUTCH CAM A		1				
057-1Y	326849-3	CLUTCH CAM A		1				
057-1Z	326849-3	CLUTCH CAM A		1				
058	326140-9	CAM SHAFT		1				
059	219020-5	SWASH BEARING 10		1				
060	227588-7	SPIRAL BEVEL GEAR 32		1				
061	257323-9	RING 8		1				
062	922118-6	HEX. SOCKET HEAD BOLT M4X12		2				
063	346038-4	BEARING RETAINER B		1				
064	211032-4	BALL BEARING 608ZZ		1				
065	324212-4	RING 8		1				
066	922147-9	HEX. SOCKET HEAD BOLT M4X25		2				
067	141230-5	INNER SUPPORT COMPLETE		1				
068	213767-3	O-RING 75		1				
069	318810-4	INNER HOUSING		1				
070	443153-6	FELT		1				

Model No.DHR242 24MM CORDLESS COMBI. HAMMER

Item	Parts No.	Description	I/C	Qty	New/Old	Opt. 1	Opt. 2	Note
071	922118-6	HEX. SOCKET HEAD BOLT M4X12		2				
072	346536-8	BEARING RETAINER A		1				
073	256536-9	FLAT FILLISTER HD PIN 6		1				
074	346538-4	WEIGHT HOLDER GUIDE		1				
075	313224-2	COUNTER WEIGHT		1				
076	346538-4	WEIGHT HOLDER GUIDE		1				
077	253726-5	FLAT WASHER 6		1				
078	961018-5	STOP RING E-5		1				
079	213008-7	O RING 22.4		1				
080	141458-5	SPIRAL BEVEL GEAR 11 COMPLETE		1				
081	210024-0	BALL BEARING 608LLU		1				
082	253835-0	FLAT WASHER 8		1				
083	619293-4	ROTOR		1				
084	210022-4	BALL BEARING 626DDW		1				
085I	629922-1	STATOR		1	*			
085J	629922-1	STATOR		1	*			
085K	629922-1	STATOR		1	*			
085L	629922-1	STATOR		1	*			
085M	629922-1	STATOR		1	*			
085N	629922-1	STATOR		1	*			
085O	629922-1	STATOR		1	*			
085P	629922-1	STATOR		1	*			
085Q	629922-1	STATOR		1	*			
085R	629922-1	STATOR		1	*			
085S	629922-1	STATOR		1	*			
085-1I	529922-0	STATOR ASS'Y	<	1	*			
085-1J	529922-0	STATOR ASS'Y	<	1	*			
085-1K	529922-0	STATOR ASS'Y	<	1	*			
085-1L	529922-0	STATOR ASS'Y	<	1	*			
085-1M	529922-0	STATOR ASS'Y	<	1	*			
085-1N	529922-0	STATOR ASS'Y	<	1	*			
085-1O	529922-0	STATOR ASS'Y	<	1	*			
085-1P	529922-0	STATOR ASS'Y	<	1	*			
085-1Q	529922-0	STATOR ASS'Y	<	1	*			
085-1R	529922-0	STATOR ASS'Y	<	1	*			
085-1S	529922-0	STATOR ASS'Y	<	1	*			
085-2E	529187-4	STATOR ASS'Y		1				
085-2I	529187-4	STATOR ASS'Y	S	1				
085-2J	529187-4	STATOR ASS'Y	S	1				
085-2K	529187-4	STATOR ASS'Y	S	1				
085-2L	529187-4	STATOR ASS'Y	S	1				

Model No.DHR242 24MM CORDLESS COMBI. HAMMER

Item	Parts No.	Description	I/C	Qty	New/Old	Opt. 1	Opt. 2	Note
085-2M	529187-4	STATOR ASS'Y	S	1				
085-2N	529187-4	STATOR ASS'Y	S	1				
085-2O	529187-4	STATOR ASS'Y	S	1				
085-2P	529187-4	STATOR ASS'Y	S	1				
085-2Q	529187-4	STATOR ASS'Y	S	1				
085-2R	529187-4	STATOR ASS'Y	S	1				
085-2S	529187-4	STATOR ASS'Y	S	1				
085-2T	529187-4	STATOR ASS'Y		1				
085-2V	529187-4	STATOR ASS'Y		1				
085-2W	529187-4	STATOR ASS'Y		1				
085-2X	529187-4	STATOR ASS'Y		1				
085-2Y	529187-4	STATOR ASS'Y		1				
085-2Z	529187-4	STATOR ASS'Y		1				
086	620241-8	CONTROLLER		1				
087I	187687-6	HOUSING SET		1	*			
D10		INC. 91			*			
087J	187687-6	HOUSING SET		1	*			
D10		INC. 91			*			
087K	187687-6	HOUSING SET		1	*			
D10		INC. 91			*			
087L	187687-6	HOUSING SET		1	*			
D10		INC. 91			*			
087M	187687-6	HOUSING SET		1	*			
D10		INC. 91			*			
087N	187687-6	HOUSING SET		1	*			
D10		INC. 91			*			
087O	187687-6	HOUSING SET		1	*			
D10		INC. 91			*			
087P	187687-6	HOUSING SET		1	*			
D10		INC. 91			*			
087Q	187687-6	HOUSING SET		1	*			
D10		INC. 91			*			
087R	187687-6	HOUSING SET		1	*			
D10		INC. 91			*			
087S	187687-6	HOUSING SET		1	*			
D10		INC. 91			*			
087-1I	183A34-5	HOUSING SET	<	1	*			
D10		INC. 91			*			
087-1J	183A34-5	HOUSING SET	<	1	*			
D10		INC. 91			*			
087-1K	183A34-5	HOUSING SET	<	1	*			
D10		INC. 91			*			

Model No.DHR242 24MM CORDLESS COMBI. HAMMER

Item	Parts No.	Description	I/C	Qty	New/Old	Opt. 1	Opt. 2	Note
087-1L	183A34-5	HOUSING SET	<	1	*			
D10		INC. 91			*			
087-1M	183A34-5	HOUSING SET	<	1	*			
D10		INC. 91			*			
087-1N	183A34-5	HOUSING SET	<	1	*			
D10		INC. 91			*			
087-1O	183A34-5	HOUSING SET	<	1	*			
D10		INC. 91			*			
087-1P	183A34-5	HOUSING SET	<	1	*			
D10		INC. 91			*			
087-1Q	183A34-5	HOUSING SET	<	1	*			
D10		INC. 91			*			
087-1R	183A34-5	HOUSING SET	<	1	*			
D10		INC. 91			*			
087-1S	183A34-5	HOUSING SET	<	1	*			
D10		INC. 91			*			
087-2E	183C02-0	HOUSING SET		1	*			
D10		INC. 91			*			
087-2I	183C02-0	HOUSING SET	S	1	*			
D10		INC. 91			*			
087-2J	183C02-0	HOUSING SET	S	1	*			
D10		INC. 91			*			
087-2K	183C02-0	HOUSING SET	S	1	*			
D10		INC. 91			*			
087-2L	183C02-0	HOUSING SET	S	1	*			
D10		INC. 91			*			
087-2M	183C02-0	HOUSING SET	S	1	*			
D10		INC. 91			*			
087-2N	183C02-0	HOUSING SET	S	1	*			
D10		INC. 91			*			
087-2O	183C02-0	HOUSING SET	S	1	*			
D10		INC. 91			*			
087-2P	183C02-0	HOUSING SET	S	1	*			
D10		INC. 91			*			
087-2Q	183C02-0	HOUSING SET	S	1	*			
D10		INC. 91			*			
087-2R	183C02-0	HOUSING SET	S	1	*			
D10		INC. 91			*			
087-2S	183C02-0	HOUSING SET	S	1	*			
D10		INC. 91			*			
087-2T	183C02-0	HOUSING SET		1	*			
D10		INC. 91			*			

Model No.DHR242 24MM CORDLESS COMBI. HAMMER

Item	Parts No.	Description	I/C	Qty	New/Old	Opt. 1	Opt. 2	Note
087-2V	183C02-0	HOUSING SET		1	*			
D10		INC. 91			*			
087-2W	183C02-0	HOUSING SET		1	*			
D10		INC. 91			*			
087-2X	183C02-0	HOUSING SET		1	*			
D10		INC. 91			*			
087-2Y	183C02-0	HOUSING SET		1	*			
D10		INC. 91			*			
087-2Z	183C02-0	HOUSING SET		1	*			
D10		INC. 91			*			
087-3	183C02-0	HOUSING SET	O	1				
D10		INC. 91						
088	815B57-8	DHR242 SERIAL NO. LABEL		1				
089	815A38-6	DHR242 NAME PLATE		1				
090	266326-2	TAPPING SCREW 4X18		10	*			
090-1	266326-2	TAPPING SCREW 4X18	O	10				
091I	187687-6	HOUSING SET		1	*			
D10		INC. 87			*			
091J	187687-6	HOUSING SET		1	*			
D10		INC. 87			*			
091K	187687-6	HOUSING SET		1	*			
D10		INC. 87			*			
091L	187687-6	HOUSING SET		1	*			
D10		INC. 87			*			
091M	187687-6	HOUSING SET		1	*			
D10		INC. 87			*			
091N	187687-6	HOUSING SET		1	*			
D10		INC. 87			*			
091O	187687-6	HOUSING SET		1	*			
D10		INC. 87			*			
091P	187687-6	HOUSING SET		1	*			
D10		INC. 87			*			
091Q	187687-6	HOUSING SET		1	*			
D10		INC. 87			*			
091R	187687-6	HOUSING SET		1	*			
D10		INC. 87			*			
091S	187687-6	HOUSING SET		1	*			
D10		INC. 87			*			
091-1I	183A34-5	HOUSING SET	<	1	*			
D10		INC. 87			*			
091-1J	183A34-5	HOUSING SET	<	1	*			
D10		INC. 87			*			

Please order the parts with part number.

Print Date 26/3/2020

Model No.DHR242 24MM CORDLESS COMBI. HAMMER

Item	Parts No.	Description	I/C	Qty	New/Old	Opt. 1	Opt. 2	Note
091-1K	183A34-5	HOUSING SET	<	1	*			
D10		INC. 87			*			
091-1L	183A34-5	HOUSING SET	<	1	*			
D10		INC. 87			*			
091-1M	183A34-5	HOUSING SET	<	1	*			
D10		INC. 87			*			
091-1N	183A34-5	HOUSING SET	<	1	*			
D10		INC. 87			*			
091-1O	183A34-5	HOUSING SET	<	1	*			
D10		INC. 87			*			
091-1P	183A34-5	HOUSING SET	<	1	*			
D10		INC. 87			*			
091-1Q	183A34-5	HOUSING SET	<	1	*			
D10		INC. 87			*			
091-1R	183A34-5	HOUSING SET	<	1	*			
D10		INC. 87			*			
091-1S	183A34-5	HOUSING SET	<	1	*			
D10		INC. 87			*			
091-2E	183C02-0	HOUSING SET		1	*			
D10		INC. 87			*			
091-2I	183C02-0	HOUSING SET	S	1	*			
D10		INC. 87			*			
091-2J	183C02-0	HOUSING SET	S	1	*			
D10		INC. 87			*			
091-2K	183C02-0	HOUSING SET	S	1	*			
D10		INC. 87			*			
091-2L	183C02-0	HOUSING SET	S	1	*			
D10		INC. 87			*			
091-2M	183C02-0	HOUSING SET	S	1	*			
D10		INC. 87			*			
091-2N	183C02-0	HOUSING SET	S	1	*			
D10		INC. 87			*			
091-2O	183C02-0	HOUSING SET	S	1	*			
D10		INC. 87			*			
091-2P	183C02-0	HOUSING SET	S	1	*			
D10		INC. 87			*			
091-2Q	183C02-0	HOUSING SET	S	1	*			
D10		INC. 87			*			
091-2R	183C02-0	HOUSING SET	S	1	*			
D10		INC. 87			*			
091-2S	183C02-0	HOUSING SET	S	1	*			
D10		INC. 87			*			

Please order the parts with part number.

Print Date 26/3/2020

Model No.DHR242 24MM CORDLESS COMBI. HAMMER

Item	Parts No.	Description	I/C	Qty	New/Old	Opt. 1	Opt. 2	Note
091-2T	183C02-0	HOUSING SET		1	*			
D10		INC. 87			*			
091-2V	183C02-0	HOUSING SET		1	*			
D10		INC. 87			*			
091-2W	183C02-0	HOUSING SET		1	*			
D10		INC. 87			*			
091-2X	183C02-0	HOUSING SET		1	*			
D10		INC. 87			*			
091-2Y	183C02-0	HOUSING SET		1	*			
D10		INC. 87			*			
091-2Z	183C02-0	HOUSING SET		1	*			
D10		INC. 87			*			
091-3	183C02-0	HOUSING SET	O	1				
D10		INC. 87						
092	453124-5	F/R CHANGE LEVER		1				
093	453123-7	SWITCH LEVER		1				
094	650709-0	SWITCH C3JW-1A-P		1				
095	233598-4	TORSION SPRING 6		1				
096	313226-8	OPENER		1				
097	644808-8	TERMINAL		1				
098	424476-1	CUSHION		1				
099	187377-1	BATTERY HOUSING SET		1				
C10	263005-3	RUBBER PIN 6		2				
D10		INC. 104						
100	263036-2	RUBBER PIN 5		1				
101	268184-2	PIN 1.5		1				
102	424473-7	CUSHION RUBBER		1				
103	424473-7	CUSHION RUBBER		1				
104	187377-1	BATTERY HOUSING SET		1				
C10	263005-3	RUBBER PIN 6		2				
D10		INC. 99						
105	893072-0	CLEAR LABEL		1				
106	890994-5	CLEAR LABEL		1				
107E	424734-5	SPONGE		2				
107I	424734-5	SPONGE	S	2				
107J	424734-5	SPONGE	S	2				
107K	424734-5	SPONGE	S	2				
107L	424734-5	SPONGE	S	2				
107M	424734-5	SPONGE	S	2				
107N	424734-5	SPONGE	S	2				
107O	424734-5	SPONGE	S	2				
107P	424734-5	SPONGE	S	2				

Model No.DHR242 24MM CORDLESS COMBI. HAMMER

Item	Parts No.	Description	I/C	Qty	New/Old	Opt. 1	Opt. 2	Note
107Q	424734-5	SPONGE	S	2				
107R	424734-5	SPONGE	S	2				
107S	424734-5	SPONGE	S	2				
107T	424734-5	SPONGE		2				
107V	424734-5	SPONGE		2				
107W	424734-5	SPONGE		2				
107X	424734-5	SPONGE		2				
107Y	424734-5	SPONGE		2				
107Z	424734-5	SPONGE		2				
A01	324219-0	DEPTH GAUGE		1				
A02E	***DC18RC	DC18RC FAST CHARGER		1				
A02I	***DC18RC	DC18RC FAST CHARGER		1				
A02K	***DC18RC	DC18RC FAST CHARGER		1				
A02L	***DC18RC	DC18RC FAST CHARGER		1				
A02M	821552-6	CONNECTOR PLASTIC CASE (TYPE4)		1				
C10	453974-8	LATCH		4				
A02N	***DC18RC	DC18RC FAST CHARGER		1				
A02O	***DC18RC	DC18RC FAST CHARGER		1				
A02P	***DC18RC	DC18RC FAST CHARGER		1				
A02Q	***DC18RC	DC18RC FAST CHARGER		1				
A02R	***DC18RC	DC18RC FAST CHARGER		1				
A02S	***DC18RC	DC18RC FAST CHARGER		1				
A02T	***DC18RC	DC18RC FAST CHARGER		1				
A02V	821552-6	CONNECTOR PLASTIC CASE (TYPE4)		1				
C10	453974-8	LATCH		4				
A02W	***DC18RC	DC18RC FAST CHARGER		1				
A02X	***DC18RC	DC18RC FAST CHARGER		1				
A02Y	***DC18RC	DC18RC FAST CHARGER		1				
A02Z	821552-6	CONNECTOR PLASTIC CASE (TYPE4)		1				
C10	453974-8	LATCH		4				
A03I	194204-5	BATTERY BL1830 SET		2	*			
A03K	194204-5	BATTERY BL1830 SET		2	*			
A03L	194204-5	BATTERY BL1830 SET		2	*			
A03M	837677-6	INNER TRAY		1	*			
A03N	194204-5	BATTERY BL1830 SET		2	*			
A03O	196399-0	BATTERY BL1840 SET		2	*			
A03P	196399-0	BATTERY BL1840 SET		2	*			
A03Q	196399-0	BATTERY BL1840 SET		2	*			
A03R	196671-0	BATTERY BL1850 SET		2	*			
A03S	196671-0	BATTERY BL1850 SET		2	*			
A03V	837677-6	INNER TRAY		1	*			

Please order the parts with part number.

Print Date 26/3/2020

Model No.DHR242 24MM CORDLESS COMBI. HAMMER

Item	Parts No.	Description	I/C	Qty	New/Old	Opt. 1	Opt. 2	Note
A03-1I	194204-5	BATTERY BL1830 SET	O	2	*			
A03-1K	194204-5	BATTERY BL1830 SET	O	2	*			
A03-1L	194204-5	BATTERY BL1830 SET	O	2	*			
A03-1M	835A31-4	INNER TRAY	S	1				
A03-1N	194204-5	BATTERY BL1830 SET	O	2	*			
A03-1O	196399-0	BATTERY BL1840 SET	O	2	*			
A03-1P	196399-0	BATTERY BL1840 SET	O	2	*			
A03-1Q	196399-0	BATTERY BL1840 SET	O	2	*			
A03-1R	196671-0	BATTERY BL1850 SET	O	2	*			
A03-1S	196671-0	BATTERY BL1850 SET	O	2	*			
A03-1V	835A31-4	INNER TRAY	S	1				
A03-1Z	835A31-4	INNER TRAY		1				
A03-2E	197600-6	BATTERY BL1830B SET		2	*			
A03-2I	197600-6	BATTERY BL1830B SET	<	2	*			
A03-2K	197600-6	BATTERY BL1830B SET	<	2	*			
A03-2L	197600-6	BATTERY BL1830B SET	<	2	*			
A03-2N	197600-6	BATTERY BL1830B SET	<	2	*			
A03-2O	197265-4	BATTERY BL1840B SET	<	2	*			
A03-2P	197265-4	BATTERY BL1840B SET	<	2	*			
A03-2Q	197265-4	BATTERY BL1840B SET	<	2	*			
A03-2R	197280-8	BATTERY BL1850B SET	<	2	*			
A03-2S	197280-8	BATTERY BL1850B SET	<	2	*			
A03-2T	197280-8	BATTERY BL1850B SET		2	*			
A03-2W	197600-6	BATTERY BL1830B SET		2	*			
A03-2X	197265-4	BATTERY BL1840B SET		2	*			
A03-2Y	197280-8	BATTERY BL1850B SET		2	*			
A03-3E	197600-6	BATTERY BL1830B SET	O	2				
A03-3I	197600-6	BATTERY BL1830B SET	O	2				
A03-3K	197600-6	BATTERY BL1830B SET	O	2				
A03-3L	197600-6	BATTERY BL1830B SET	O	2				
A03-3N	197600-6	BATTERY BL1830B SET	O	2				
A03-3O	197265-4	BATTERY BL1840B SET	O	2				
A03-3P	197265-4	BATTERY BL1840B SET	O	2				
A03-3Q	197265-4	BATTERY BL1840B SET	O	2				
A03-3R	197280-8	BATTERY BL1850B SET	O	2				
A03-3S	197280-8	BATTERY BL1850B SET	O	2				
A03-3T	197280-8	BATTERY BL1850B SET	O	2				
A03-3W	197600-6	BATTERY BL1830B SET	O	2				
A03-3X	197265-4	BATTERY BL1840B SET	O	2				
A03-3Y	197280-8	BATTERY BL1850B SET	O	2				
A04E	450128-8	BATTERY COVER		1				
A04I	450128-8	BATTERY COVER		1				

Model No.DHR242 24MM CORDLESS COMBI. HAMMER

Item	Parts No.	Description	I/C	Qty	New/Old	Opt. 1	Opt. 2	Note
A04K	450128-8	BATTERY COVER		1				
A04L	450128-8	BATTERY COVER		1				
A04M	802L14-5	DHR242ZJ PLASTIC CASE LABEL		2				
A04N	450128-8	BATTERY COVER		1				
A04O	450128-8	BATTERY COVER		1				
A04P	450128-8	BATTERY COVER		1				
A04Q	450128-8	BATTERY COVER		1				
A04R	450128-8	BATTERY COVER		1				
A04S	450128-8	BATTERY COVER		1				
A04T	450128-8	BATTERY COVER		1				
A04V	817W65-1	DHR242ZJV PLASTIC CASE LABEL		2				
A04W	450128-8	BATTERY COVER		1				
A04X	450128-8	BATTERY COVER		1				
A04Y	450128-8	BATTERY COVER		1				
A04Z	818X83-8	DHR242ZJW PLASTIC CASE LABEL		2				
A05E	140H96-8	PLASTIC CASE COMPLETE		1				
C10	162271-8	LATCH		2				
C20	890904-2	INDICATION LABEL		1				
A05I	141401-4	PLASTIC CASE COMPLETE		1				
C10	162271-8	LATCH		2				
C20	890904-2	INDICATION LABEL		1				
A05K	141402-2	PLASTIC CASE COMPLETE		1	*			
C10	162271-8	LATCH		2	*			
C20	890904-2	INDICATION LABEL		1	*			
A05L	821552-6	CONNECTOR PLASTIC CASE (TYPE4)		1				
C10	453974-8	LATCH		4				
A05M	802L34-9	DHR242ZJ INDICATION LABEL		1				
A05N	821552-6	CONNECTOR PLASTIC CASE (TYPE4)		1				
C10	453974-8	LATCH		4				
A05O	141401-4	PLASTIC CASE COMPLETE		1				
C10	162271-8	LATCH		2				
C20	890904-2	INDICATION LABEL		1				
A05P	821552-6	CONNECTOR PLASTIC CASE (TYPE4)		1				
C10	453974-8	LATCH		4				
A05Q	821552-6	CONNECTOR PLASTIC CASE (TYPE4)		1				
C10	453974-8	LATCH		4				
A05R	141401-4	PLASTIC CASE COMPLETE		1				
C10	162271-8	LATCH		2				
C20	890904-2	INDICATION LABEL		1				

Model No.DHR242 24MM CORDLESS COMBI. HAMMER

Item	Parts No.	Description	I/C	Qty	New/Old	Opt. 1	Opt. 2	Note
A05S	821552-6	CONNECTOR PLASTIC CASE (TYPE4)		1				
C10	453974-8	LATCH		4				
A05T	821552-6	CONNECTOR PLASTIC CASE (TYPE4)		1				
C10	453974-8	LATCH		4				
A05V	806J35-7	DHR242ZJV INDICATION LABEL		1				
A05W	821552-6	CONNECTOR PLASTIC CASE (TYPE4)		1				
C10	453974-8	LATCH		4				
A05X	821552-6	CONNECTOR PLASTIC CASE (TYPE4)		1				
C10	453974-8	LATCH		4				
A05Y	821552-6	CONNECTOR PLASTIC CASE (TYPE4)		1				
C10	453974-8	LATCH		4				
A05Z	818X82-0	DHR242ZJW INDICATION LABEL		1				
A05-1K	140H96-8	PLASTIC CASE COMPLETE	<	1				
C10	162271-8	LATCH		2				
C20	890904-2	INDICATION LABEL		1				
A06I	802L23-4	DHR242RFE PLASTIC CASE LABEL		2	*			
A06K	802L26-8	DHR242RFEV PLASTIC CASE LABEL		2	*			
A06L	837677-6	INNER TRAY		1	*			
A06N	837677-6	INNER TRAY		1	*			
A06O	802L17-9	DHR242RME PLASTIC CASE LABEL		2	*			
A06P	837677-6	INNER TRAY		1	*			
A06Q	837677-6	INNER TRAY		1	*			
A06R	804J02-6	DHR242RTE PLASTIC CASE LABEL		2				
A06S	837677-6	INNER TRAY		1	*			
A06T	837677-6	INNER TRAY		1	*			
A06-1E	819D57-2	DHR242RFEW PLASTIC CASE LABEL		2				
A06-1I	802L12-9	DHR242RFE PLASTIC CASE LABEL	<	2				
A06-1K	810L73-5	DHR242RFEV PLASTIC CASE LABEL	<	2				
A06-1L	835A31-4	INNER TRAY	S	1				
A06-1N	835A31-4	INNER TRAY	S	1				
A06-1O	802L16-1	DHR242RME PLASTIC CASE LABEL	<	2				
A06-1P	835A31-4	INNER TRAY	S	1				
A06-1Q	835A31-4	INNER TRAY	S	1				
A06-1S	835A31-4	INNER TRAY	S	1				
A06-1T	835A31-4	INNER TRAY	S	1				
A06-1W	835A31-4	INNER TRAY		1				

Model No.DHR242 24MM CORDLESS COMBI. HAMMER

Item	Parts No.	Description	I/C	Qty	New/Old	Opt. 1	Opt. 2	Note
A06-1X	835A31-4	INNER TRAY		1				
A06-1Y	835A31-4	INNER TRAY		1				
A07E	***DX06	DUST EXTRACTION SYSTEM		1				
D10		COMPO-PARTS						
D20		INC. A08						
A07K	***DX01	DUST EXTRACTION SYSTEM		1				
D10		COMPO-PARTS						
D20		INC. A08						
A07L	802L13-7	DHR242RFJ PLASTIC CASE LABEL		2				
A07N	802L15-3	DHR242RFJV PLASTIC CASE LABEL		2				
A07P	802L18-7	DHR242RMJ PLASTIC CASE LABEL		2				
A07Q	802L29-2	DHR242RMJV PLASTIC CASE LABEL		2				
A07S	804J04-2	DHR242RTJ PLASTIC CASE LABEL		2				
A07T	806F03-6	DHR242RTJV PLASTIC CASE LABEL		2				
A07V	***DX01	DUST EXTRACTION SYSTEM		1				
D10		COMPO-PARTS						
D20		INC. A08						
A07W	818X64-2	DHR242RFJW PLASTIC CASE LABEL		2				
A07X	818X78-1	DHR242RMJW PLASTIC CASE LABEL		2				
A07Y	818X80-4	DHR242RTJW PLASTIC CASE LABEL		2				
A07Z	***DX06	DUST EXTRACTION SYSTEM		1				
D10		COMPO-PARTS						
D20		INC. A08						
A08E	424474-5	SEALING CAP		5				
A08K	424474-5	SEALING CAP		5				
A08L	802L33-1	DHR242RFJ INDICATION LABEL		1				
A08N	802L35-7	DHR242RFJV INDICATION LABEL		1				
A08P	802L36-5	DHR242RMJ INDICATION LABEL		1				
A08Q	802K98-7	DHR242RMJV INDICATION LABEL		1				
A08S	804J03-4	DHR242RTJ INDICATION LABEL		1				
A08T	806F02-8	DHR242RTJV INDICATION LABEL		1				
A08V	424474-5	SEALING CAP		5				
A08W	818X65-0	DHR242RFJW INDICATION LABEL		1				
A08X	818X79-9	DHR242RMJW INDICATION LABEL		1				
A08Y	818X81-2	DHR242RTJW INDICATION LABEL		1				

Model No.DHR242 24MM CORDLESS COMBI. HAMMER

Item	Parts No.	Description	I/C	Qty	New/Old	Opt. 1	Opt. 2	Note
A08Z	424474-5	SEALING CAP		5				
A09N	***DX01	DUST EXTRACTION SYSTEM		1				
D10		COMPO-PARTS						
D20		INC. A10						
A09Q	***DX01	DUST EXTRACTION SYSTEM		1				
D10		COMPO-PARTS						
D20		INC. A10						
A09T	***DX01	DUST EXTRACTION SYSTEM		1				
D10		COMPO-PARTS						
D20		INC. A10						
A09W	***DX06	DUST EXTRACTION SYSTEM		1				
D10		COMPO-PARTS						
D20		INC. A10						
A09X	***DX06	DUST EXTRACTION SYSTEM		1				
D10		COMPO-PARTS						
D20		INC. A10						
A09Y	***DX06	DUST EXTRACTION SYSTEM		1				
D10		COMPO-PARTS						
D20		INC. A10						
A10N	424474-5	SEALING CAP		5				
A10Q	424474-5	SEALING CAP		5				
A10T	424474-5	SEALING CAP		5				
A10W	424474-5	SEALING CAP		5				
A10X	424474-5	SEALING CAP		5				
A10Y	424474-5	SEALING CAP		5				
A11L	837349-3	SPONGE 50-50	S	1				
A11M	837349-3	SPONGE 50-50	S	1				
A11N	837349-3	SPONGE 50-50	S	1				
A11P	837349-3	SPONGE 50-50	S	1				
A11Q	837349-3	SPONGE 50-50	S	1				
A11S	837349-3	SPONGE 50-50	S	1				
A11T	837349-3	SPONGE 50-50	S	1				
A11V	837349-3	SPONGE 50-50	S	1				

Please order the parts with part number.

Print Date 26/3/2020