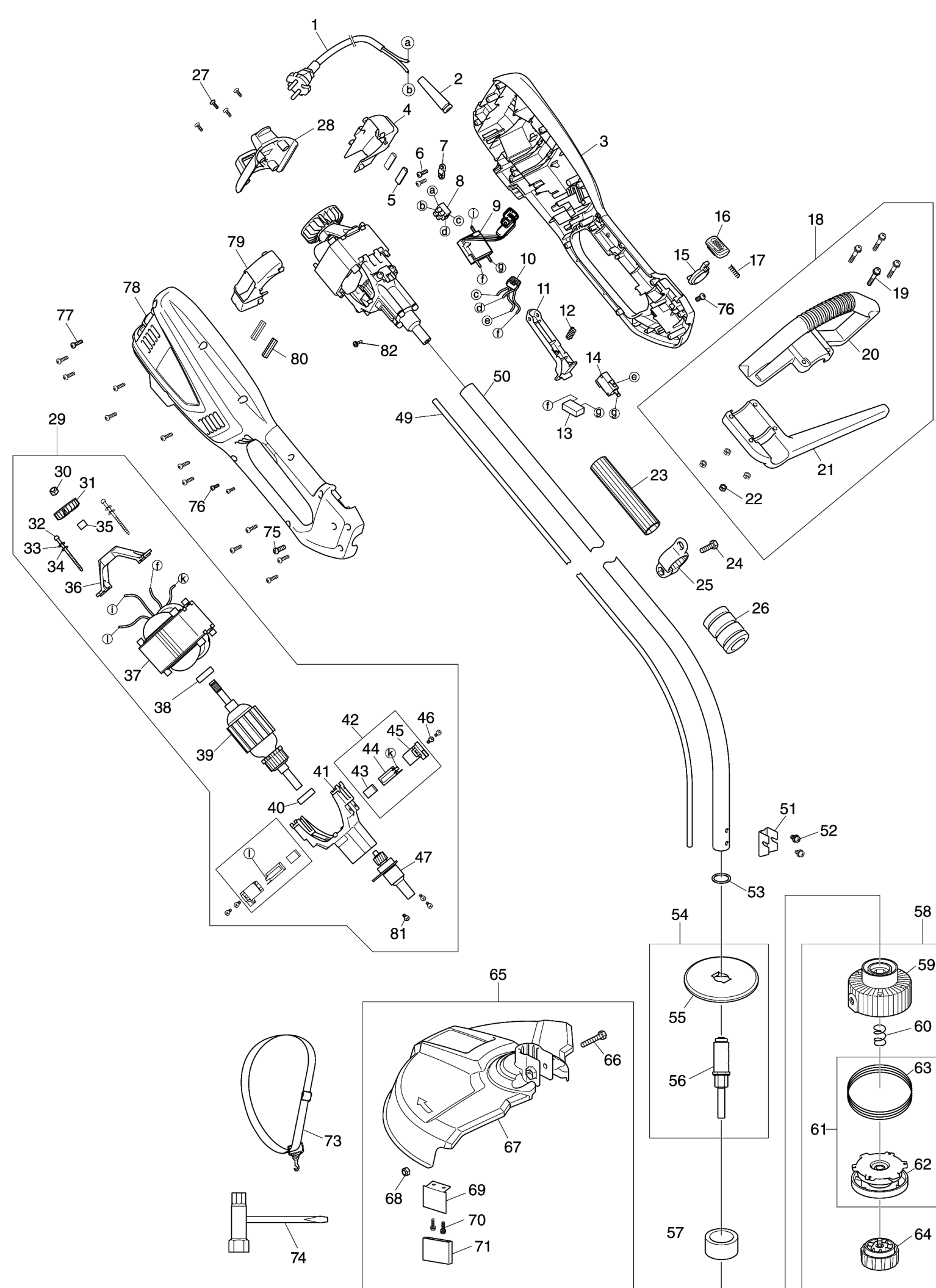


Model No.UR3501 ELECTRIC GRASS TRIMMER



Model No.UR3501 ELECTRIC GRASS TRIMMER

| Артикул | Детали     | Описание                      | Замена | Количество | New/Old | Продажи | Закупка | Примечание |
|---------|------------|-------------------------------|--------|------------|---------|---------|---------|------------|
| 001     | YA00000497 | POWER CORD & PLUG             |        | 1          |         |         |         |            |
| 002     | YA00000516 | CORD PROTECTOR                |        | 1          |         |         |         |            |
| 003     | YA00000559 | LEFT HOUSING                  |        | 1          | *       |         |         |            |
| 003-1   | YA00000617 | HOUSING ASSEMBLY              | S      | 1          |         |         |         |            |
|         | D10        | INC. 078                      |        |            |         |         |         |            |
| 004     | YA00000562 | LEFT VOLUTE CASE              |        | 1          |         |         |         |            |
| 005     | YA00000514 | RUBBER PAD                    |        | 2          |         |         |         |            |
| 006     | YA00000456 | SELF TAPPING SCREW            |        | 2          | *       |         |         |            |
| 006-1   | YA00000618 | TAPPING SCREW ST4X14          | O      | 2          |         |         |         |            |
| 007     | YA00000547 | CABLE PRESS BOARD             |        | 1          |         |         |         |            |
| 008     | YA00000501 | TERMINAL SET                  |        | 2          |         |         |         |            |
| 009     | YA00000500 | CONTROL PCB                   |        | 1          |         |         |         |            |
| 010     | YA00000499 | INDUCTANCE                    |        | 1          |         |         |         |            |
| 011     | YA00000554 | SWITCH TRIGGER                |        | 1          |         |         |         |            |
| 012     | YA00000513 | SPRING                        |        | 1          |         |         |         |            |
| 013     | YA00000498 | CAPACITOR                     |        | 1          |         |         |         |            |
| 014     | YA00000555 | SWITCH                        |        | 1          |         |         |         |            |
| 015     | YA00000539 | SPACING COLLAR                |        | 1          |         |         |         |            |
| 016     | YA00000525 | PUSH BUTTON                   |        | 1          |         |         |         |            |
| 017     | YA00000511 | COMPRESSION SPRING            |        | 1          |         |         |         |            |
| 018     | YA00000494 | AUX HANDLE ASS'Y              |        | 1          |         |         |         |            |
|         | D10        | INC. 19-22                    |        |            |         |         |         |            |
| 019     | YA00000445 | BARREL SHAPED HEAD SCREW      |        | 4          | *       |         |         |            |
| 019-1   | YA00000621 | NYLOC SCREW                   | O      | 4          |         |         |         |            |
| 020     | YA00000564 | AUX HANDLE COVER              |        | 1          |         |         |         |            |
| 021     | YA00000563 | AUX HANDLE SUPPORT            |        | 1          |         |         |         |            |
| 022     | YA00000462 | HEXAGONAL LOCKING NUT         |        | 4          | *       |         |         |            |
| 022-1   | YA00000622 | SELF-LOCKING NUT M5           | O      | 4          |         |         |         |            |
| 023     | YA00000522 | INSULATING COVER              |        | 1          |         |         |         |            |
| 024     | YA00000449 | BARREL SHAPED HEAD SCREW      |        | 1          | *       |         |         |            |
| 024-1   | YA00000711 | BARREL SHAPED HEAD SCREW      | O      | 1          |         |         |         |            |
| 025     | YA00000541 | SHOULDER BELT RING            |        | 1          |         |         |         |            |
| 026     | YA00000521 | RUBBER COVER                  |        | 1          |         |         |         |            |
| 027     | YA00000453 | SELF-TAPPING SCREW            |        | 4          | *       |         |         |            |
| 027-1   | YA00000625 | SELF TAPPING SCREW            | O      | 4          |         |         |         |            |
| 028     | YA00000560 | REAR COVER                    |        | 1          |         |         |         |            |
| 029     | YA00000490 | MOTOR ASS'Y                   |        | 1          |         |         |         |            |
|         | D10        | INC. 30-41, 43-47, 81         |        |            |         |         |         |            |
| 030     | YA00000463 | ANTI-LOOSE NUT                |        | 1          |         |         |         |            |
| 031     | YA00000507 | IMPELLER                      |        | 1          |         |         |         |            |
| 032     | YA00000538 | STATOR SCREW                  |        | 2          | *       |         |         |            |
| 032-1   | YA00000722 | STATOR SCREW                  | O      | 2          |         |         |         |            |
| 033     | YA00000523 | SPRING WASHER                 |        | 2          |         |         |         |            |
| 034     | YA00000524 | FLAT WASHER                   |        | 2          |         |         |         |            |
| 035     | YA00000531 | AXLE SLEEVE                   |        | 1          |         |         |         |            |
| 036     | YA00000526 | REAR BRACKET                  |        | 1          |         |         |         |            |
| 037     | YA00000505 | STATOR ASS'Y                  |        | 1          |         |         |         |            |
| 038     | YA00000431 | 608 BEARING                   |        | 1          |         |         |         |            |
| 039     | YA00000508 | ARMATURE ASS'Y                |        | 1          |         |         |         |            |
| 040     | YA00000430 | BEARING                       |        | 1          |         |         |         |            |
| 041     | YA00000484 | FRONT SUPPORT ASS'Y           |        | 1          |         |         |         |            |
| 042     | YA00000489 | CARBON BRUSH ASS'Y            |        | 2          |         |         |         |            |
|         | D10        | INC. 43-45                    |        |            |         |         |         |            |
| 043     | YA00000504 | CARBON BRUSH                  |        | 1          |         |         |         |            |
| 044     | YA00000502 | COPPER BRUSH HOLDER           |        | 1          |         |         |         |            |
| 045     | YA00000503 | BRUSH HOLDER BRACKET          |        | 1          |         |         |         |            |
| 046     | YA00000455 | 3 IN 1 SCREW                  |        | 4          | *       |         |         |            |
| 046-1   | YA00000630 | PAN HEAD SCREW M4X12 WITH WR  | O      | 4          |         |         |         |            |
| 047     | YA00000483 | SHAFT ASS'Y                   |        | 1          |         |         |         |            |
| 049     | YA00000551 | FLEXIBLE SHAFT                |        | 1          |         |         |         |            |
| 050     | YA00000495 | TUBE ASS'Y                    |        | 1          |         |         |         |            |
| 051     | YA00000527 | FIXING FRAME                  |        | 1          |         |         |         |            |
| 052     | YA00000447 | 3 IN 1 MACHINE SCREW          |        | 2          | *       |         |         |            |
| 052-1   | YA00000709 | 3 IN 1 MACHINE SCREW          | O      | 2          |         |         |         |            |
| 053     | YA00000534 | SEALING RING                  |        | 1          |         |         |         |            |
| 054     | YA00000485 | OUTPUT SHAFT ASS'Y            |        | 1          |         |         |         |            |
|         | D10        | INC. 55-56                    |        |            |         |         |         |            |
| 055     | YA00000432 | SAFETY GUARD                  |        | 1          |         |         |         |            |
| 056     | YA00000482 | SHAFT JOINT ASS'Y             |        | 1          |         |         |         |            |
| 057     | YA00000568 | DUST PROOF RING               |        | 1          |         |         |         |            |
| 058     | YA00000474 | SPOOL ASS'Y                   |        | 1          |         |         |         |            |
|         | D10        | INC. 59-60, 62-64             |        |            |         |         |         |            |
| 059     | YA00000488 | SPOOL BASE ASS'Y              |        | 1          |         |         |         |            |
| 060     | YA00000512 | COMPRESSION SPRING            |        | 1          |         |         |         |            |
| 061     | YA00000475 | WINDING BASE ASS'Y            |        | 1          |         |         |         |            |
|         | D10        | INC. 62-63                    |        |            |         |         |         |            |
| 062     | YA00000476 | SPOOL COVER ASS'Y             |        | 1          |         |         |         |            |
| 063     | YA00000436 | NYLON LINE                    |        | 1          |         |         |         |            |
| 064     | YA00000486 | KNOB ASS'Y                    |        | 1          |         |         |         |            |
| 065     | YA00000491 | SAFETY GUARD ASS'Y            |        | 1          |         |         |         |            |
|         | D10        | INC. 66-71                    |        |            |         |         |         |            |
| 066     | YA00000448 | BARREL SHAPED HEAD SCREW      |        | 1          | *       |         |         |            |
| 066-1   | YA00000654 | BOLT M6X35                    | O      | 1          |         |         |         |            |
| 067     | YA00000544 | SAFETY GUARD                  |        | 1          |         |         |         |            |
| 068     | YA00000463 | ANTI-LOOSE NUT                |        | 1          |         |         |         |            |
| 069     | YA00000529 | BLADE                         |        | 1          |         |         |         |            |
| 070     | YA00000457 | SELF-TAPPING SCREW            |        | 2          | *       |         |         |            |
| 070-1   | YA00000655 | TRUSS HEAD TAPPING SCREW 4X12 | O      | 2          |         |         |         |            |
| 071     | YA00000518 | BLADE COVER                   |        | 1          |         |         |         |            |
| 072     | YA00000493 | ACCESSORY                     |        | 1          | *       |         |         |            |
|         | D10        | INC. 73,74                    |        |            |         |         |         |            |
| 073     | YA00000435 | SHOULDER BELT                 |        | 1          |         |         |         |            |
| 074     | YA00000437 | SPANNER                       |        | 1          |         |         |         |            |
| 075     | YA00000451 | SCREW                         |        | 2          | *       |         |         |            |
| 075-1   | YA00000640 | SCREW M5X10                   | O      | 2          |         |         |         |            |
| 076     | YA00000454 | SELF-TAPPING SCREW            |        | 2          | *       |         |         |            |
| 076-1   | YA00000641 | SELF TAPPING SCREW            | O      | 2          |         |         |         |            |
| 077     | YA00000452 | SELF-TAPPING SCREW            |        | 12         | *       |         |         |            |
| 077-1   | YA00000656 | SELF TAPPING SCREW ST4.2      | O      | 12         |         |         |         |            |
| 078     | YA00000558 | RIGHT HOUSING                 |        | 1          | *       |         |         |            |
| 078-1   | YA00000617 | HOUSING ASSEMBLY              | S      | 1          |         |         |         |            |
|         | D10        | INC. 3                        |        |            |         |         |         |            |
| 079     | YA00000561 | RIGHT VOLUTE HOUSING          |        | 1          |         |         |         |            |
| 080     | YA00000514 | RUBBER PAD                    |        | 2          |         |         |         |            |
| 081     | YA00000455 | 3 IN 1 SCREW                  |        | 3          | *       |         |         |            |
| 081-1   | YA00000630 | PAN HEAD SCREW M4X12 WITH WR  | O      | 3          |         |         |         |            |