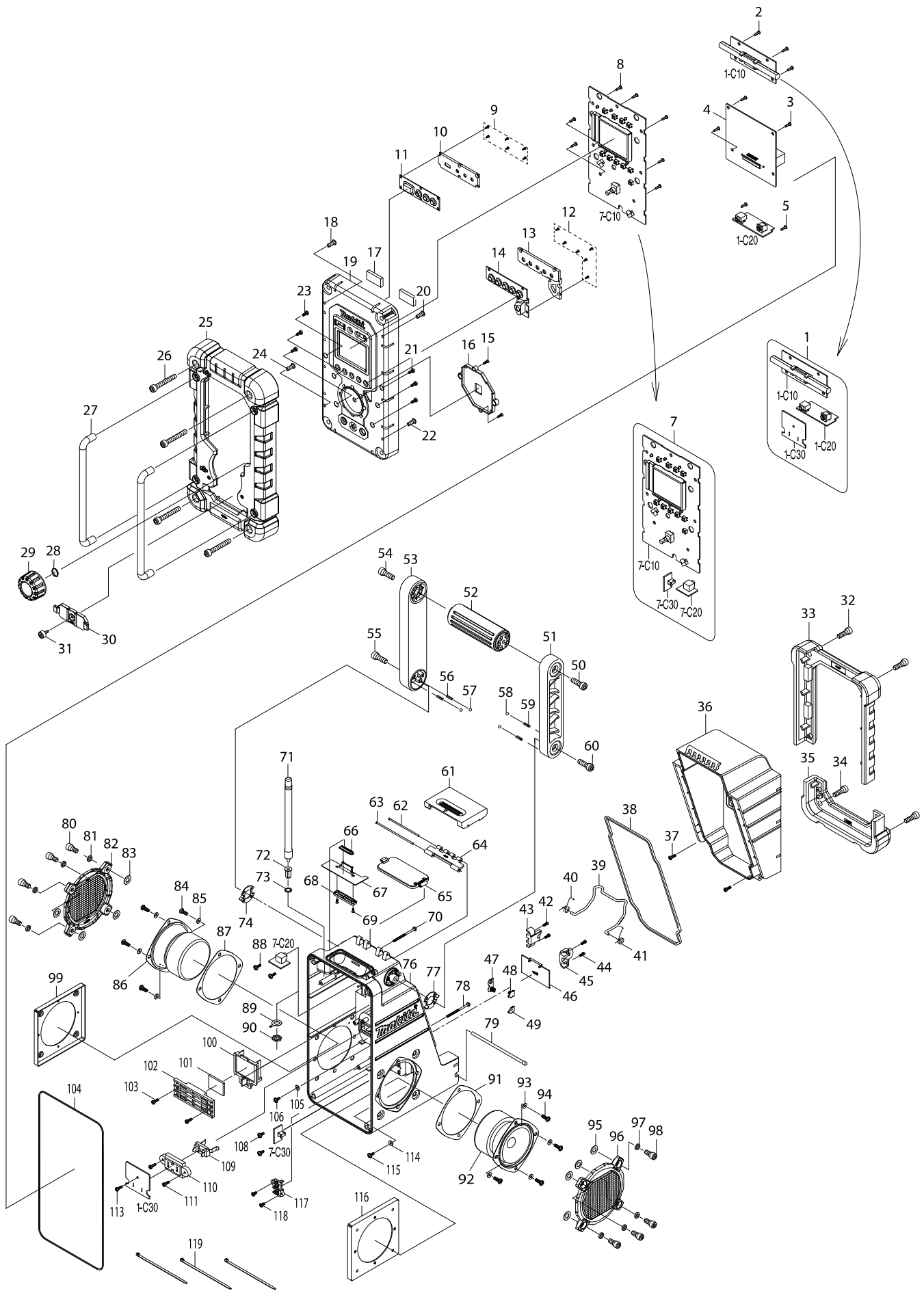


Model No. BMR103B JOB SITE RADIO



Model No. BMR103B JOB SITE RADIO

Item	Parts No.	Description	I/C	Qty	N/O	Opt. 1	Opt. 2	Note
001	SE00000213	CIRCUIT BOARD F ALL ASS'Y		1				
C10	SE00000214	CIRCUIT BOARD F ANT ASS'Y		1				
C20	SE00000215	CIRCUIT BOARD F DC-JACK ASS'Y		1				
C30	SE00000216	CIRCUIT BOARD F PWR-WIRE ASS'Y		1				
002	SE00000193	SCREW 3X10		3				
003	SE09163102	SCREW M3X10		3				
004	SE00000217	CIRCUIT BOARD A ASS'Y		1				
005	SE00000193	SCREW 3X10		2				
007	SE00000218	CIRCUIT BOARD C ASS'Y		1				
C10	SE00000219	CIRCUIT BOARD C		1				
C20	SE00000220	CIRCUIT BOARD C AUX-2 ASS'Y		1				
C30	SE00000221	CIRCUIT BOARD C BATT._DET ASSY		1				
008	SE09163102	SCREW M3X10		7				
009	SE09090011	SCREW 1.7		6				
010	SE00000234	POWER BUTTON HOLDER		1				
011	SE00000235	POWER BUTTON		1				
012	SE09090011	SCREW 1.7		6				
013	SE00000236	PRESET BUTTON HOLDER		1				
014	SE00000237	PRESET BUTTON		1				
015	SE00000238	SCREW PTB M2.6		2				
016	SE00000239	KNOB LENS HOLDER		1				
017	SE00000240	ANT BAR SPACER		2				
018	SE09064161	SCREW M4X16		1				
019	SE00000241	FRONT CABINET ASS'Y		1				
020	SE09064161	SCREW M4X16		1				
021	SE09163102	SCREW M3X10		3				
022	SE09064161	SCREW M4X16		1				
023	SE09163102	SCREW M3X10		3				
024	SE09064161	SCREW M4X16		1				
025	SE00000242	FRONT BUMPER		1				
026	SE00000160	SCREW PTHE6X47(CR)		4				
027	SE0338PC5Z	FRONT BAR		2				
028	SE21B1110A	ROTARY KNOB RING		1				
029	SE00000243	ROTARY KNOB		1				
030	SE00000244	JACK COVER		1				
031	SE09173106	HEX SCREW M3X10		1				
032	SE09176166	HEX SCREW M6X16		2				
033	SE00000162	BATTERY COVER BUMPER		1				
034	SE09176166	HEX SCREW M6X16		2				
035	SE00000165	REAR BUMPER		1				
036	SE00000245	BATTERY COVER		1				
037	SE09163102	SCREW M3X10		2				
038	SE00000168	PACKING		1				
039	SE00000169	SUPPORT BAR		1				
040	SE00000170	SPRING-L		1				
041	SE00000171	SPRING-R		1				
042	SE09163102	SCREW M3X10		2				
043	SE00000246	SPRING HOLDER-L		1				

Model No. BMR103B JOB SITE RADIO

Item	Parts No.	Description	I/C	Qty	N/O	Opt. 1	Opt. 2	Note
044	SE09163102	SCREW M3X10		2				
045	SE00000247	SPRING HOLDER-R		1				
046	SE00000248	BACK UP BATTERY COVER		1				
047	SE021E9030	+/- BATTERY CONTACT ASS'Y		1				
048	SE021E9020	BATTERY CONTACT (-)		1				
049	SE021E9010	BATTERY CONTACT (+)		1				
050	SE00000176	SCREW PTHE6X20(CR)		1				
051	SE00000249	HANDLE HOLDER(R)		1				
052	SE00000179	HANDLE		1				
053	SE00000250	HANDLE HOLDER(L)		1				
054	SE00000176	SCREW PTHE6X20(CR)		1				
055	SE09176166	HEX SCREW M6X16		1				
056	SE00000184	SPRING		2				
057	SE09994007	STEEL BALL		2				
058	SE09994007	STEEL BALL		2				
059	SE00000184	SPRING		2				
060	SE09176166	HEX SCREW M6X16		1				
061	SE00000190	BATTERY COVER LOCKER		1				
062	SE021PC050	LOCKER FIXER PIN 63.8		1				
063	SE021PC040	LOCKER FIXER PIN 79.5		1				
064	SE00000067	LOCKER HINGER		1				
065	SE00000251	CRADLE COVER		1				
066	SE00000252	IPOD CONNECTOR SLEEVE		1				
067	SE00000253	CIRCUIT BOARD G IPOD ASS'Y		1				
068	SE00000254	PCB G HOLDER		1				
069	SE00000255	SCREW M2		2				
070	SE09163452	SCREW M3X45		1				
071	SE00000256	ROD ANT (BLK / J)		1	*			
071-1	SE00000191	ROD ANT (BLK)	<	1				
072	SE021J9032	ROD ANT HOLDER		1				
073	SE024J9050	PACKING		1				
074	SE00000192	HANDLE SUS-PLATE(L)		1				
076	SE00000258	REAR CABINET ASS'Y		1				
077	SE00000187	HANDLE SUS-PLATE (R)		1				
078	SE09163452	SCREW M3X45		1				
079	SE021PC030	BATTERY COVER LOCKER		1				
080	SE9076146A	HEX SCREW M6X14		4				
081	SE024J9040	PACKING		4				
082	SE00000259	SPEAKER NET ASS'Y		1				
083	SE024J9090	PACKING		4				
084	SE09090023	SCREW M4X12		4				
085	SE024J9070	PACKING		4				
086	SE01620771	SPEAKER		1				
087	SE024J9030	PACKING		1				
088	SE00000193	SCREW 3X10		2				
089	SE021PC100	ROD ANT TERMINAL		1				
090	SE021P0020	NUT		1				
091	SE024J9030	PACKING		1				

